

# Cynomolgus ITPRIPL1 Protein; His Tag

## Product Information

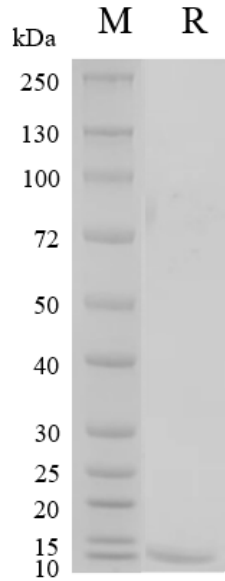
|                        |   |
|------------------------|---|
| <b>Product Name</b>    | Cynomolgus ITPRIPL1 Protein; His Tag  |
| <b>Storage temp.</b>   | Store at $\leq -70^{\circ}\text{C}$ , stable for 6 months after receipt.<br>Recommend to aliquot the protein into smaller quantities for optimal storage. Please minimize freeze-thaw cycles. |
| <b>Catalog# / Size</b> | <b>GM-87668RP-100 / 100 <math>\mu\text{g}</math></b><br><b>GM-87668RP-1000 / 1 mg</b>   |

## Protein Information

|                           |  |
|---------------------------|--|
| <b>Alternative Names</b>  | ITPRIP like 1; ITPRIPL1; KIAA1754L; CD3L1  |
| <b>Source</b>             | Cynomolgus ITPRIPL1 Protein; His Tag (GM-87668RP) is expressed from human 293 cells (HEK-293). It contains AA His 25 - Gly 103 (Accession # XP_005575041.2).<br>This protein carries a His tag at the C-terminus.  |
| <b>Purity</b>             | > 95% as determined by SDS-PAGE  |
| <b>Endotoxin</b>          | < 1 EU/ $\mu\text{g}$ , determined by LAL gel clotting assay   |
| <b>Predicted Mol Mass</b> | 9.4 KDa  |
| <b>Formulation</b>        | Supplied as a 0.2 $\mu\text{m}$ filtered solution of PBS, pH7.4.   |
| <b>Description</b>        | <p>ITPRIP like 1 (Inositol 1,4,5-trisphosphate receptor interacting protein-like 1) protein is a protein related to the inositol trisphosphate receptor, which is associated with the release of calcium ions stored within cells. This protein may play a role in regulating the release of calcium ions within cells and has an important role in cell signaling.</p> <p>ITPRIP like 1 protein interacts with the inositol trisphosphate receptor (IP3R) to regulate the release of stored calcium ions within cells. This calcium ion release is an important regulatory process in cell signaling, apoptosis, cell proliferation, and other cellular physiological functions. Therefore, ITPRIP like 1 protein plays a significant role in the regulation of calcium ions within cells.</p> <p>Research suggests that ITPRIP like 1 protein may be closely related to the normal functioning of the nervous system, muscle system, and other tissue organs. Further research will help better understand the mechanism of action of ITPRIP like 1 protein in biological processes, providing new insights and strategies for the treatment and prevention of related diseases.</p> |

Version:3.3 Revision

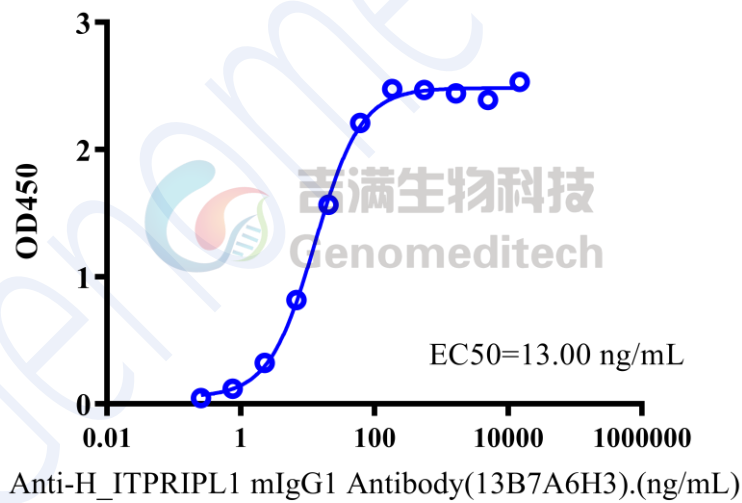
## SDS-PAGE



On SDS-PAGE under reducing (R) condition. The gel was stained overnight with Coomassie Blue. The purity of the protein is greater than 95%.

## Bioactivity-ELISA

**Bioactivity-ELISA**  
 0.1  $\mu$ g Cynomolgus ITPRIPL1 Protein; His Tag of per well



Cynomolgus ITPRIPL1 Protein; His Tag (Catalog # GM-87668RP) was immobilized at 1  $\mu$ g/ml (100  $\mu$ L/well). Increasing concentrations of Anti-H\_ITPRIPL1 mIgG1 Antibody(13B7A6H3) (Catalog # GM-87827AB) were added.